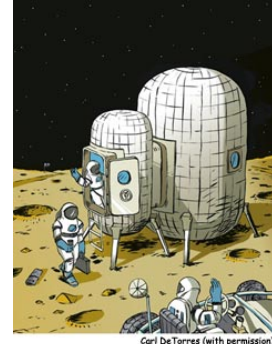




Build a Moon Habitat!

You can be a Moon explorer too. Practice by building your own Moon habitat. Pretend you are an astronaut working with your teammates on the Moon to build your new home.



What you need:

- 148 sheets of newspaper (use a paper with large pages—tabloid size is too small—and use the full square spread)
- Pencil
- Masking or packaging tape
- Scissors
- Yardstick
- Stapler (heavy-duty, if available)
- Bed sheet, colored tissue paper, or more newspapers for "walls" (optional)
- White glue or glue stick (optional)

What to do:

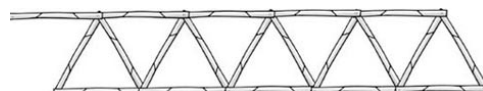
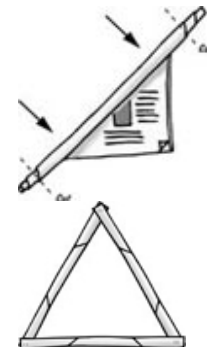
1. Use four sheets of newspaper to build each log. Lay the sheets out flat, one on top of the other.
2. Set the pencil in the corner and roll across on the diagonal. Use the pencil to help you get started, and then remove the pencil. Roll evenly, but don't try to make the logs as thin as the pencil. When you get to the opposite corner of the paper, you'll have a tube or log. Tape the log shut.



Repeat this process until you have 37 logs. Then trim the ends a bit, making sure all the logs are the same length. They will be around 30 inches long.

Now you will need a big, open space in which to construct the habitat.

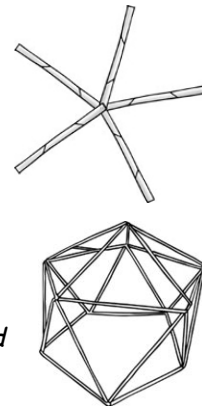
3. Staple three logs together to create a triangle. Repeat until you have five triangles.
4. Staple the five triangles to each other at their bottom corners. Add connecting logs across the top.



Find this activity online and learn more by visiting NASA's Space Place website: <http://spaceplace.nasa.gov/moon-habitat>.
Find more fun activities at <http://spaceplace.nasa.gov/menu/do>.

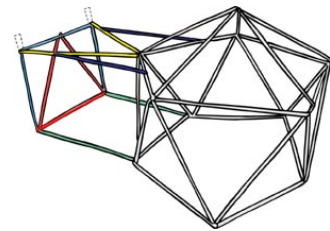


5. Staple the remaining five logs together at the center to make a star.
6. Then raise the five connected triangles, or walls, off the floor and staple the ends together to form a five-sided (pentagonal) structure. It helps to have one person hold up the walls while another person staples.
7. Now staple the free ends of the star to the junctions of the triangles on the top of the base, and the structure will stand by itself.



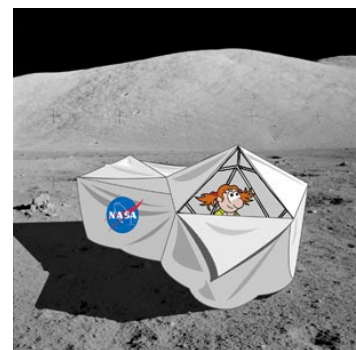
Construct the "airlock:"

8. You should have 12 logs left. These will make the "airlock." Staple three logs together to make another triangle (red in above drawing). Use two more logs (green) to attach the base of this triangle to one of the base logs of the "habitat." This triangle becomes the airlock door.
9. Using three more logs (blue), create a square by stapling them around the "door." The side logs will be a bit too long, so cut them off to make a square.
10. Use two more logs (yellow) to make a triangle to support the airlock at the top. To do this, staple the ends to the two top corners of the square and staple the other ends together where the triangles meet on the habitat.
11. Use the last two logs (purple) to stabilize the airlock as shown in the drawing.



Fill in with solid walls (optional):

12. You can give the structure "solid" walls by either carefully draping a sheet or two over it or by covering each section with tissue paper or newspaper. To do this, smear glue onto the logs and gently press pieces of colored tissue paper or newspaper onto the triangles. Don't forget to leave a door! You can rip or cut off the loose edges of the tissue paper.



Don't forget the NASA logo! Print it, cut it out, and pin or glue it to the outside of your Moon habitat. (http://spaceplace.nasa.gov/review/moon-habitat/nasalogo_color.pdf)

Find this activity online and learn more by visiting NASA's Space Place website: <http://spaceplace.nasa.gov/moon-habitat>.
Find more fun activities at <http://spaceplace.nasa.gov/menu/do>.